

Dossier CMP Arles : 783

Page/Sheet 1/16

Client / Customer : AIR LIQUIDE AGS GmbH

Engineered System N° :




1 RESERVOIR DE STOCKAGE LIN 1000MT

1 x 1000MT LIN STORAGE TANK

ITEM B 72001

TABLEAU CONTROLE AZOTE

NITROGEN CONTROL BOARD

2		31/05/05	HONNONS		31/05/05	HULIN		31/05/05	LEBOUCQ		
1		20/01/05	NANTIER		20/01/05	HULIN		20/01/05	LEBOUCQ		
EDITION EDITION N°	REFERENCE CLIENT REF.	DATE	NOM NAME	SIGN.	DATE	NOM NAME	SIGN.	DATE	NOM NAME	SIGN.	ETAT D'AVANC. STATUS
		REDACTEUR DRAWN UP BY			VERIFICATEUR CHECKED BY			APPROBATEUR APPROVED BY			

Projet : **ASU No.9 KOSICE**

Project

Classement CMP Arles :

CMP Arles document N°

783-109

Ce document est la propriété de CMP Arles. Il ne pourra sans autorisation écrite être utilisé ou communiqué à des tiers, toutes précautions utiles seront prises pour éviter sa divulgation.

This document is the property of the CMP Arles. It may not be used or transmitted to third parties without the written consent of the company.
All necessary precautions shall be taken to avoid disclosure.

Dossier CMP Arles : 783

Page/Sheet 2/16

Client / Customer : AIR LIQUIDE AGS GmbH

Plan N° : 783-109

INDICE DE REVISION: 0/A/ / / / /

revision number

Page	DESIGNATION <i>description</i>	INDICE DE REVISION									
		<i>revision number</i>									
		0	A	B	C	D	E	F	G	H	
1	Front page	1	2								
2	List of current revisions / subject of modifications	1	2								
3	Elevation view (general assembly)	1	2								
4	View F	1	2								
5	View F	1									
6	View F	1									
7	View G	1									
8	Details	1									
9	Details	1									
10	Details	1									
11	Details	1	2								
12	WPS table	1									
13	Part list / packing list	1	2								
14	Part list / packing list	1									
15	Part list / packing list	1	2								
16	Part list / packing list	1									

OBJET DES MODIFICATIONS*Subject of modifications*

INDICE DE L'EDITION	OBJET DE LA MODIFICATION
<i>Edition N°</i>	<i>Subject of the modification</i>
1	Première diffusion / <i>First issue</i>
2	<i>Modified wide of measurement on manometer items 37 & 39</i>

Ce document est la propriété de CMP Arles. Il ne pourra sans autorisation écrite être utilisé ou communiqué à des tiers, toutes précautions utiles seront prises pour éviter sa divulgation.

*This document is the property of the CMP Arles. It may not be used or transmitted to third parties without the written consent of the company.
All necessary precautions shall be taken to avoid disclosure.*

Dossier CMP Arles : 783

Client / Customer : AIR LIQUIDE AGS GmbH

Engineered System N° :

Plan N° : 783-109

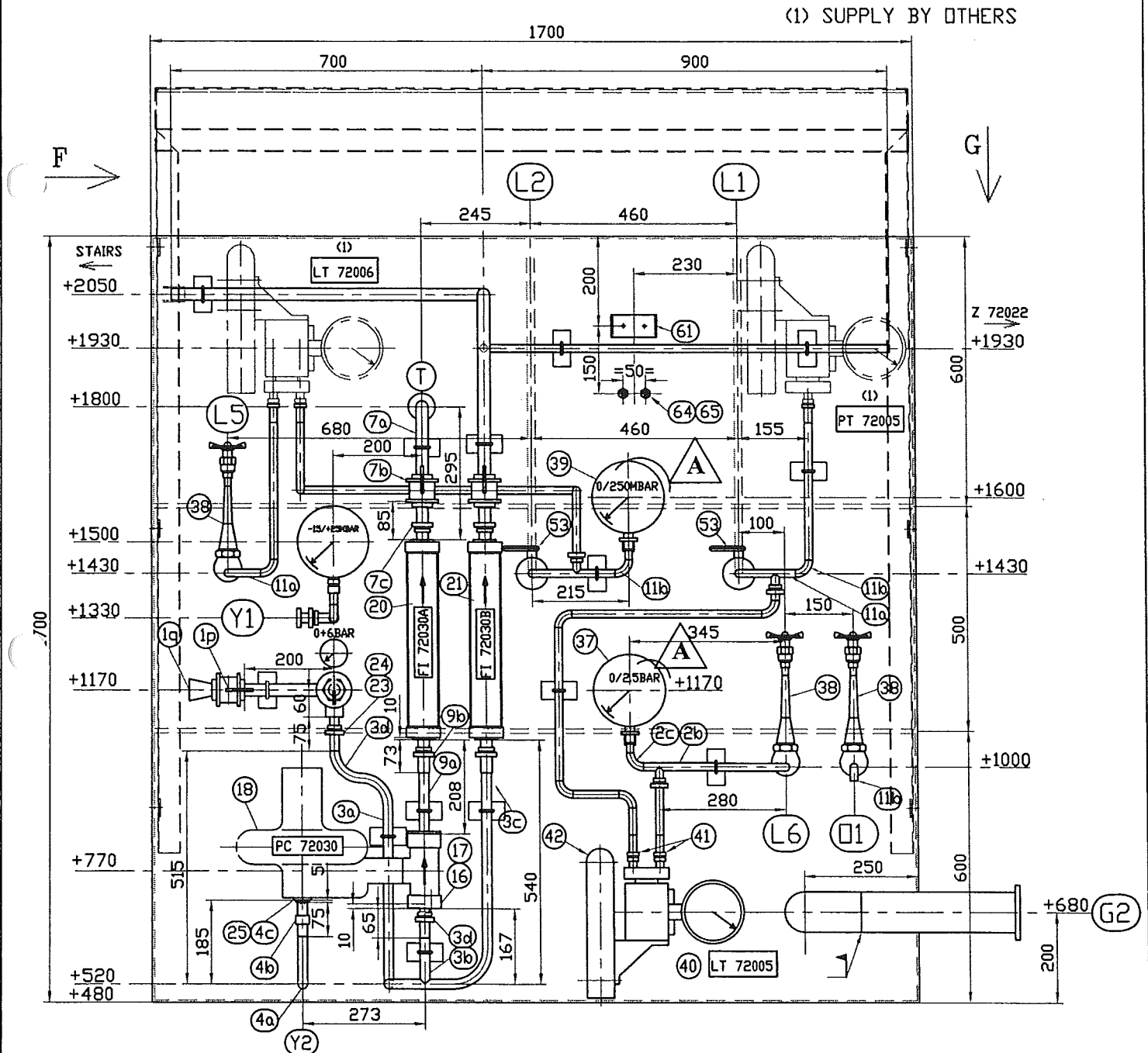
ELEVATION VIEW (GENERAL ASSEMBLY)

Page/Sheet 3/16

Rev A

Echelle/Scale
/

For partlists see pages 13 to 16



Ce document est la propriété de CMP Arles. Il ne pourra sans autorisation écrite être utilisé ou communiqué à des tiers, toutes précautions utiles seront prises pour éviter sa divulgation.

This document is the property of the CMP Arles. It may not be used or transmitted to third parties without the written consent of the company.

All necessary precautions shall be taken to avoid disclosure.

Dossier CMP Arles : 783

Page/Sheet 4/16

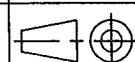
Client / Customer : AIR LIQUIDE AGS GmbH

Engineered System N° :

Rev A

Plan N° : 783-109

VIEW F

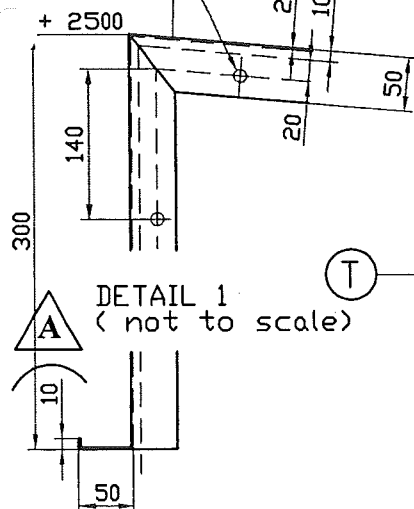


Echelle/Scale
1/12

For partlists see pages 13 to 16

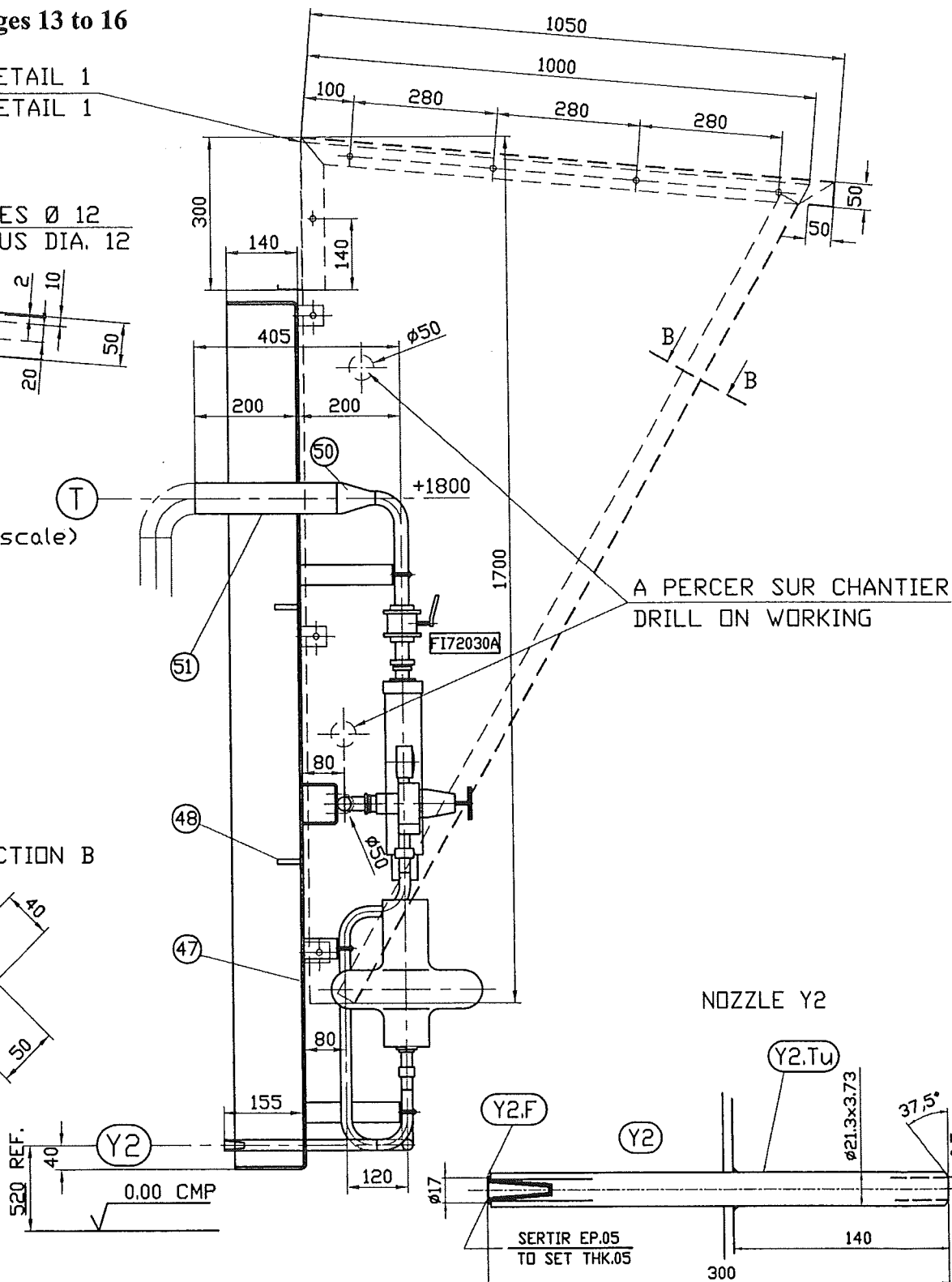
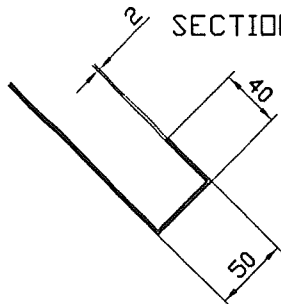
VOIR DETAIL 1
SEE DETAIL 1

HOLES Ø 12
TROUS DIA. 12



DETAIL 1
(not to scale)

SECTION B



Ce document est la propriété de CMP Arles. Il ne pourra sans autorisation écrite être utilisé ou communiqué à des tiers, toutes précautions utiles seront prises pour éviter sa divulgation.

This document is the property of the CMP Arles. It may not be used or transmitted to third parties without the written consent of the company.
All necessary precautions shall be taken to avoid disclosure.

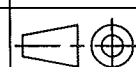
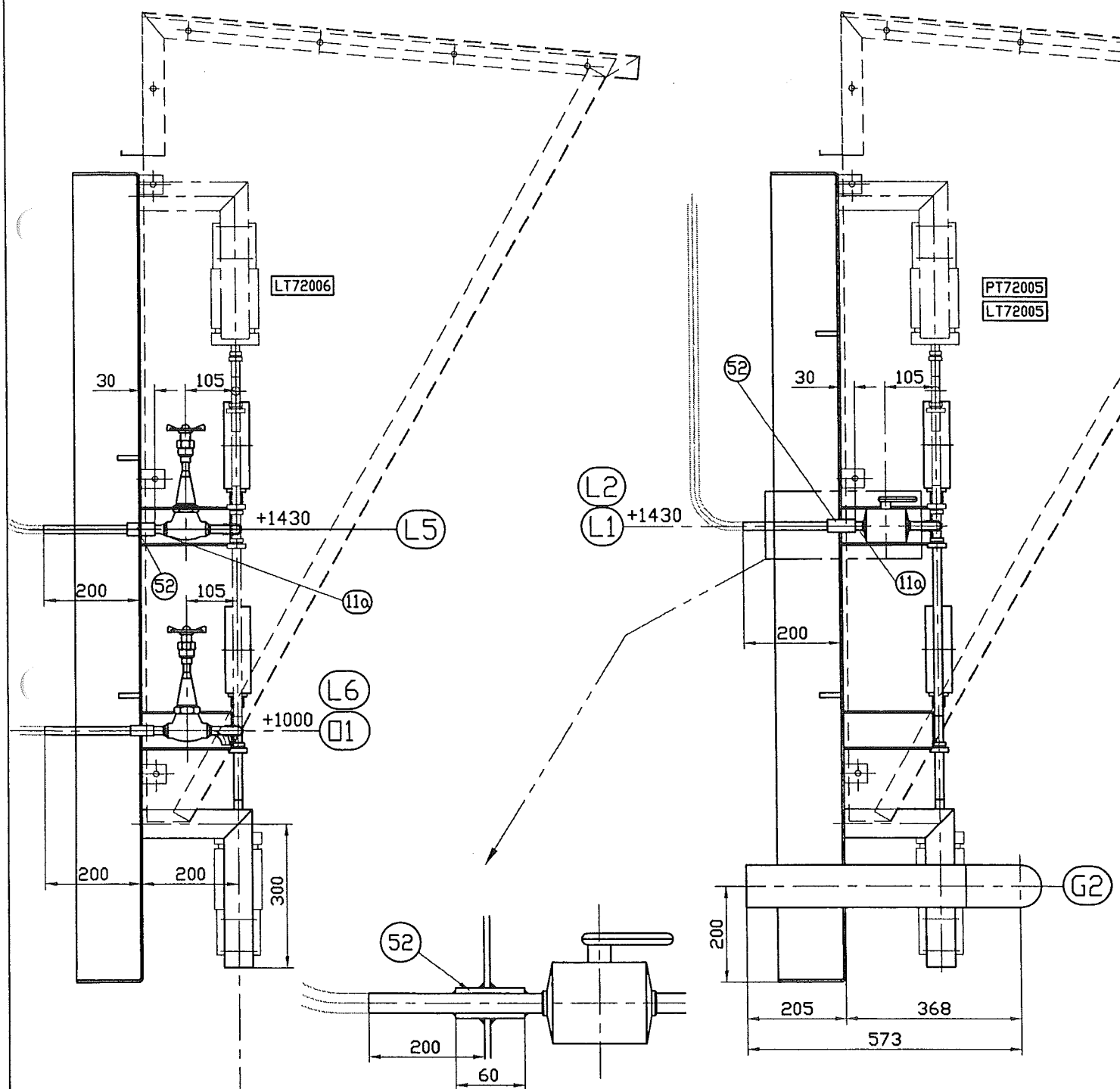
*This document is the property of the CMP Arles. It may not be used or transmitted to third parties without the written consent of the company.
All necessary precautions shall be taken to avoid disclosure.*

Dossier CMP Arles : 783

Page/Sheet 6/16

Client / Customer : AIR LIQUIDE AGS GmbH**Engineered System N° :**

Rev 0

Plan N° : 783-109**VIEW F**Echelle/Scale
1/12**For partlists see pages 13 to 16**

Ce document est la propriété de CMP Arles. Il ne pourra sans autorisation écrite être utilisé ou communiqué à des tiers, toutes précautions utiles seront prises pour éviter sa divulgation.

This document is the property of the CMP Arles. It may not be used or transmitted to third parties without the written consent of the company.
All necessary precautions shall be taken to avoid disclosure.

Dossier CMP Arles : 783

Page/Sheet 7/16
Rev 0

Client / Customer : AIR LIQUIDE AGS GmbH

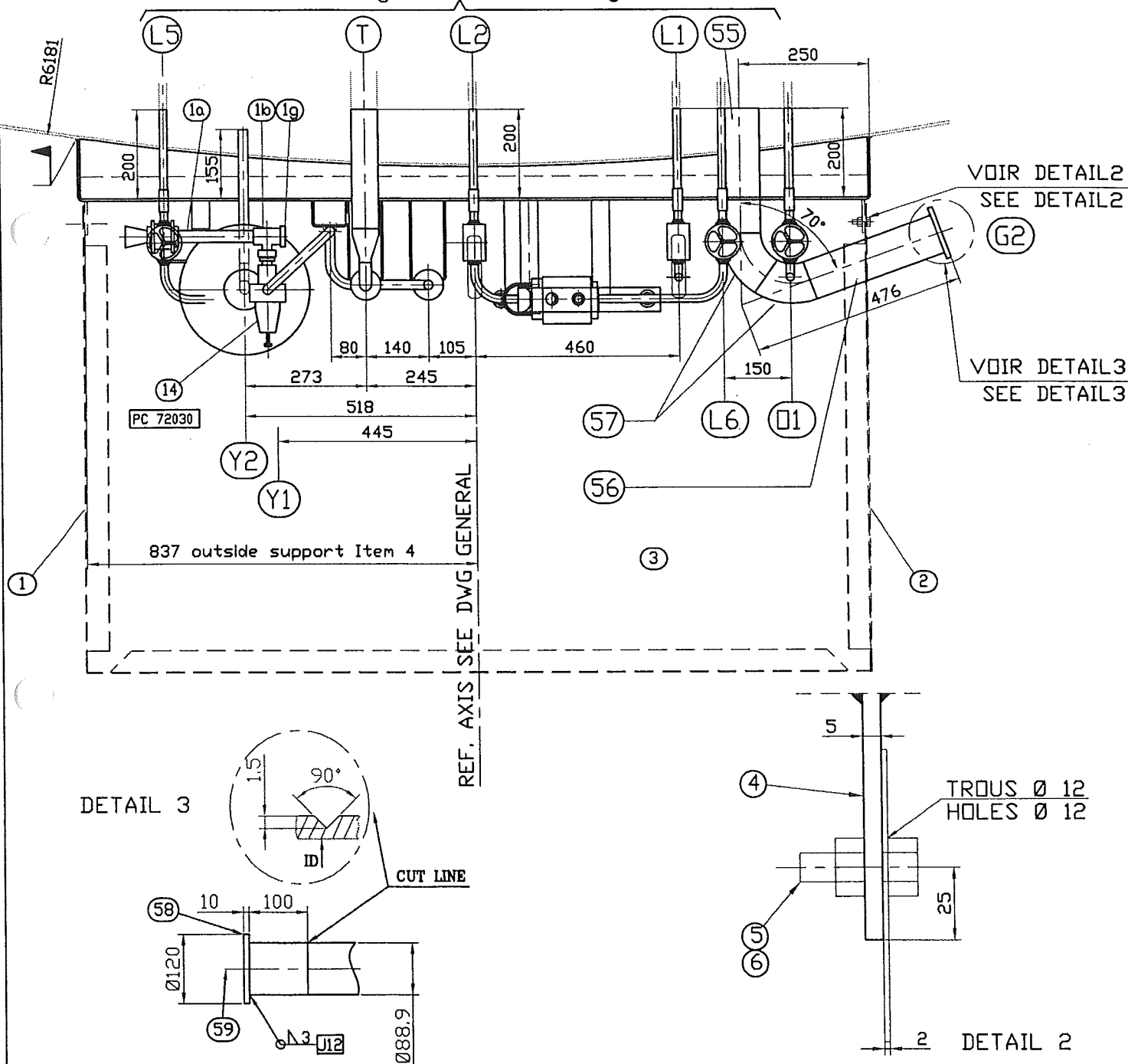
Engineered System N° :

Plan N° : 783-109

VIEW G

Echelle/Scale
/

See dwg. 783-115 for drilling
through the outer casing



For partlists see pages 13 to 16

Dossier CMP Arles : 783

Page/Sheet 8/16

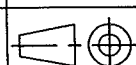
Client / Customer : AIR LIQUIDE AGS GmbH

Engineered System N° :

Rev 0

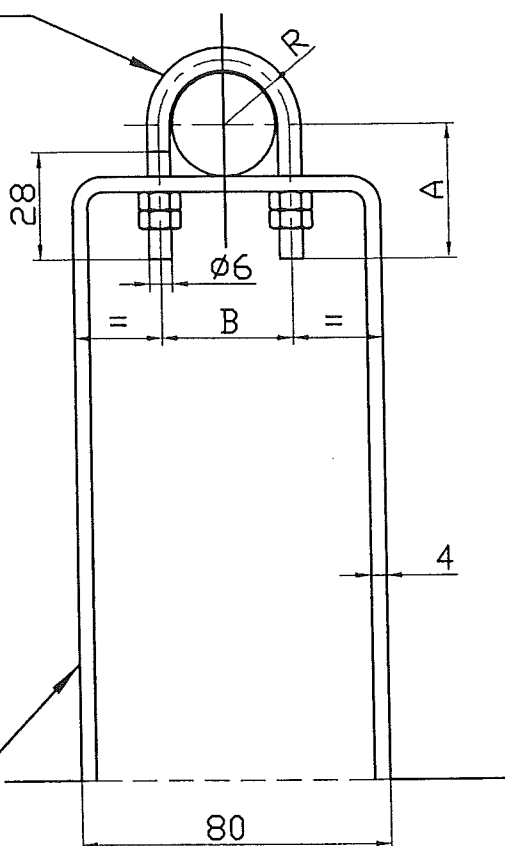
Plan N° : 783-109

DETAILS

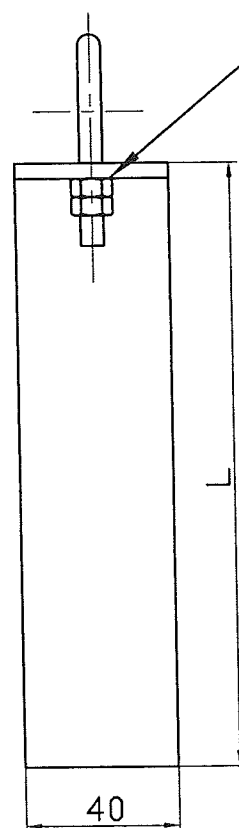


Echelle/Scale

ITEM SEE
TABLEAU



NUTS HM6
HOLES Ø8



ITEM SEE
TABLEAU

31	36	Ø17.3	25	24	9	191
30	35	Ø26.9	38	34	14	186
29	34	Ø21.3	35	28	11	189
ITEM SUPPORT	ITEM COLLARD	Ø PIPE	A	B	R	L

SUPPORTS DETAIL

For partlists see pages 13 to 16

Ce document est la propriété de CMP Arles. Il ne pourra sans autorisation écrite être utilisé ou communiqué à des tiers, toutes précautions utiles seront prises pour éviter sa divulgation.

This document is the property of the CMP Arles. It may not be used or transmitted to third parties without the written consent of the company.

All necessary precautions shall be taken to avoid disclosure.

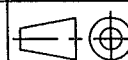
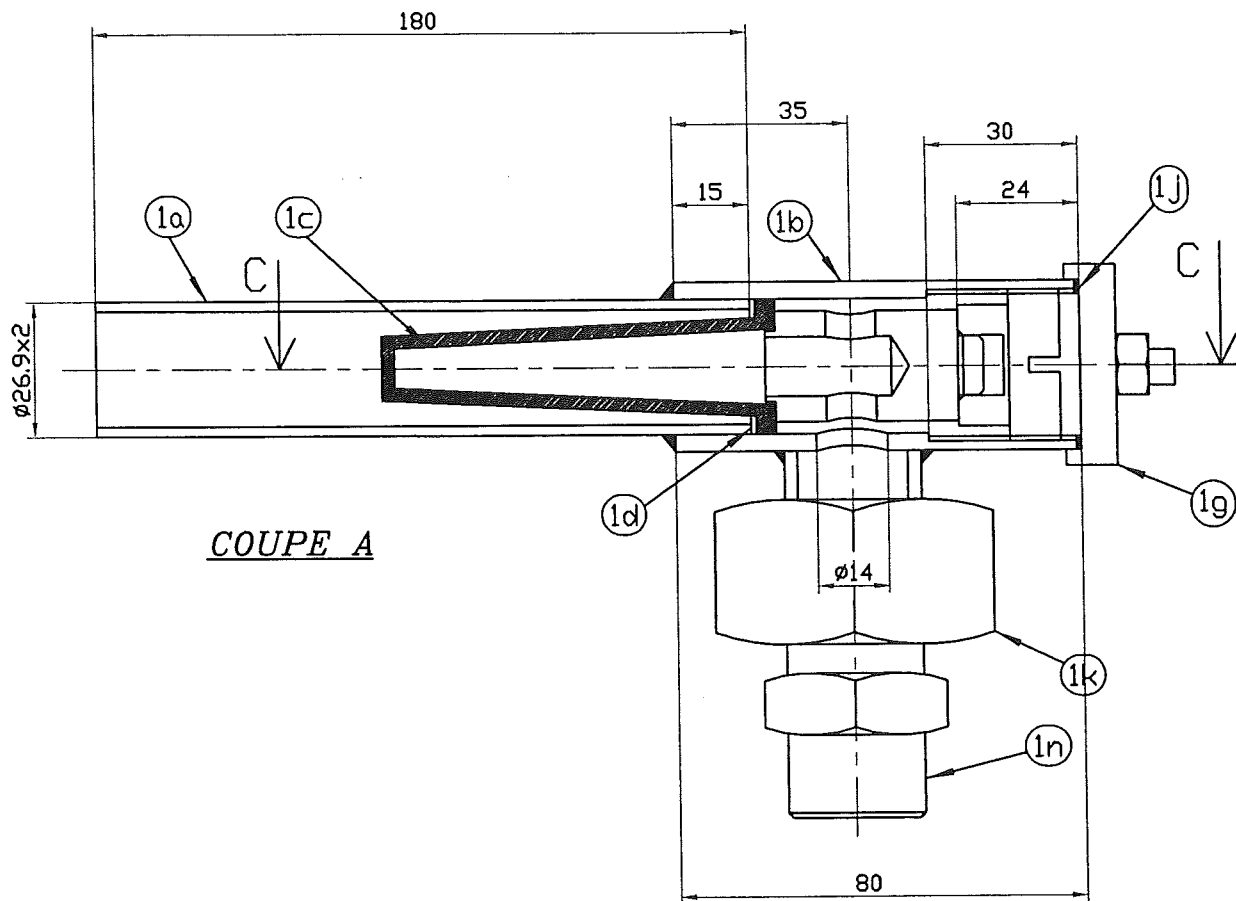
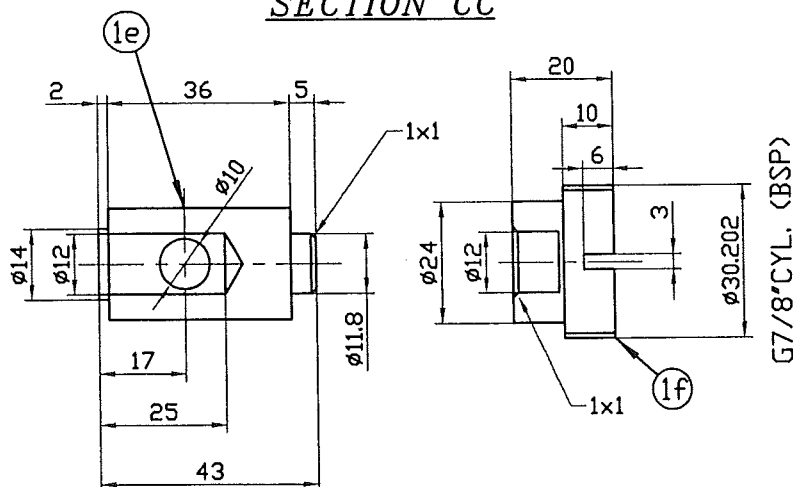
Dossier CMP Arles : 783

Page/Sheet 9/16

Client / Customer : AIR LIQUIDE AGS GmbH

Engineered System N° :

Rev 0

Plan N° : 783-109**DETAILS**Echelle/Scale
1/1.5COUPE ASECTION CC

G7/8"CYL. (BSP)

For partlists see pages 13 to 16

Ce document est la propriété de CMP Arles. Il ne pourra sans autorisation écrite être utilisé ou communiqué à des tiers, toutes précautions utiles seront prises pour éviter sa divulgation.

This document is the property of the CMP Arles. It may not be used or transmitted to third parties without the written consent of the company.
All necessary precautions shall be taken to avoid disclosure.

Dossier CMP Arles : 783

Page/Sheet 11/16
Rev A

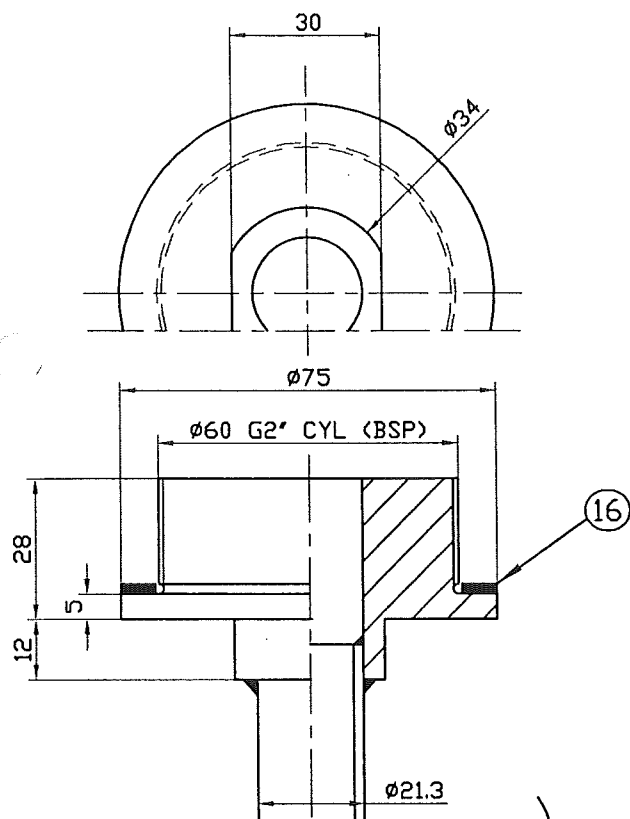
Client / Customer : AIR LIQUIDE AGS GmbH

Engineered System N° :

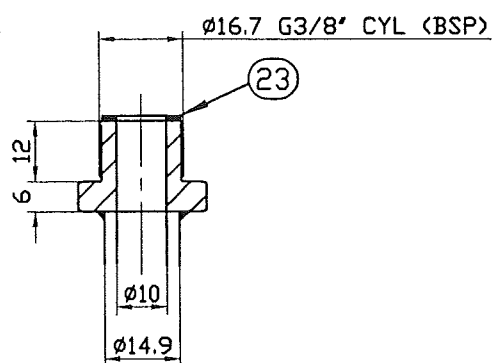
Plan N° : 783-109

DETAILS

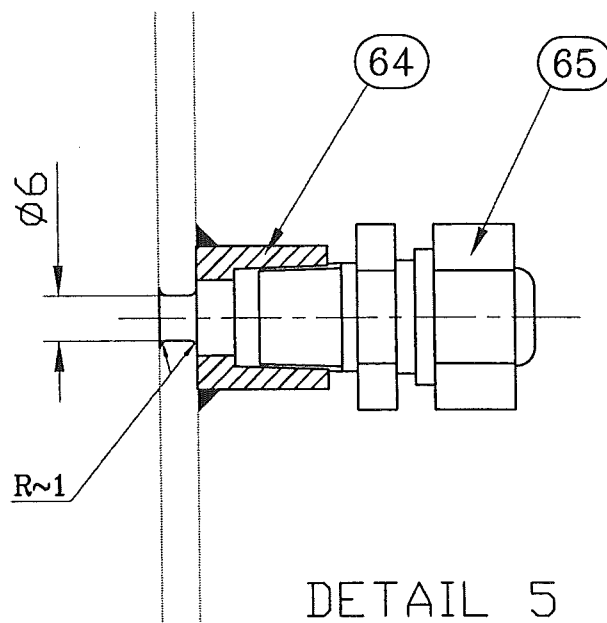
Echelle/Scale
1/1.5



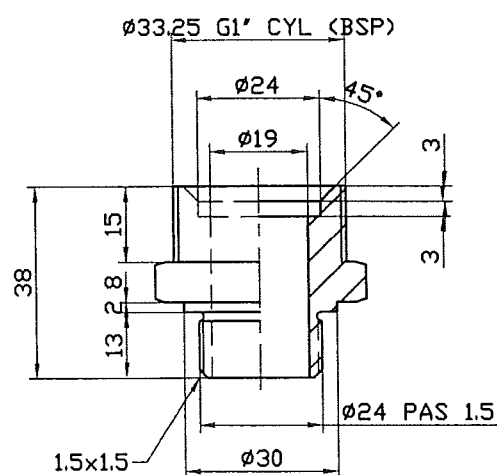
DETAIL REP.17



DETAIL REP.24



DETAIL 5



DETAIL REP.1n

For partlists see pages 13 to 16

Ce document est la propriété de CMP Arles. Il ne pourra sans autorisation écrite être utilisé ou communiqué à des tiers, toutes précautions utiles seront prises pour éviter sa divulgation.

This document is the property of the CMP Arles. It may not be used or transmitted to third parties without the written consent of the company.
All necessary precautions shall be taken to avoid disclosure.

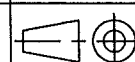
Dossier CMP Arles : 783

Page/Sheet 12/16

Client / Customer : AIR LIQUIDE AGS GmbH

Engineered System N° :

Rev 0

Plan N° : 783-109**WPS Table**

Echelle/Scale

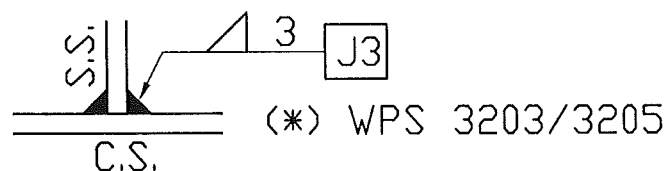
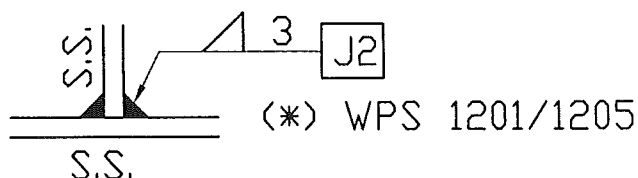
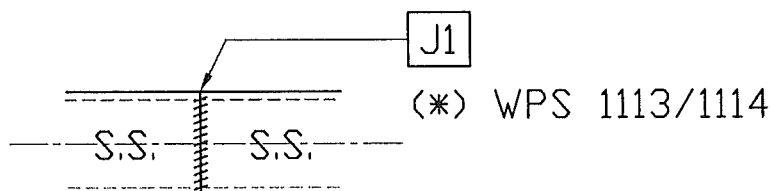
1) TYPICAL FILLET WELD



2)

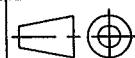


= SITE WELDING

TYPICAL WELDED JOINT

* see list on CRYO-CS1

All necessary precautions shall be taken to avoid disclosure.

Dossier CMP Arles : 783Page/Sheet 14/16
Rev 0**Client / Customer : AIR LIQUIDE AGS GmbH** *Engineered System N° :***Plan N° : 783-109****PART LIST / PACKING LIST**

Echelle/Scale

CONTROL BOARD INCLUDING ITEMS:									
11a		TUBE Ø17.15x1.65 (pipe 3/8" sch 10S)		A312 TP304L	/				
		Delivered of 3 tubes length 1500 for this items							
11b	10+1	COUDE Ø17.15x1.65 (elbow 3/8" sch 10S)		A403 WP304L	/				
11d	3	RACCORD 3 PIECES 3/8" LISSE/LISSE 3/8" (3 pieces fitting)		316L*	/				
14	1	MANO DETENDEUR (SAF REF:2937-0101) (pressure reducer)							
16	2	JOINT Ø75x60x2 (gasket)		NEOPRENE	/				
17	2	REDUCTION G2" (reducer)		A479 304L*	/				
18	1	REGULATEUR CHARLEDAVE SERIE PMT TYPE A101 (pressure reducer regulator)		/	/				
20	1	GYROMETRE 20MBAR (TYPE 115T3) (flowmeter)		/	/				
21	1	GYROMETRE 1BAR (TYPE 115T3) (flowmeter)		/	/				
23	1	JOINT Ø15x10x2 (gasket)		NEOPRENE	/				
24	1	REDUCTION G3/8" (reducer)		304/304L*	/				
25	1	JOINT Ø40x33x2 (gasket)		NEOPRENE	/				
29	4	SUPPORT Ep:4 (plate thk 4)		A240 304/304L	/				
30	4	SUPPORT Ep:4 (plate thk 4)		A240 304/304L	/				
31	6	SUPPORT Ep:4 (plate thk 4)		A240 304/304L	/				
32	1	MANOMETRE A CAPSULE AVEC TUBULURE + ECROU 1/2" GAZ (pressure gauge)		/	/				
34	4	ETRIER + 2 ECROUS HM6 (collard + 2 nuts HM6)		304/316L*	/				
35	4	ETRIER + 2 ECROUS HM6 (collard + 2 nuts HM6)		304/316L*	/				
36	6	ETRIER + 2 ECROUS HM6 (collard + 2 nuts HM6)		304/316L*	/				
NOZZLE Y1									
Tu	1	TUBE SS Ø21.3x3.73 (pipe 1/2" sch 80S) Seamless		A312 TP304L	/				
Y1.F	1	ELEMENT FILTRANT CONIQUE A COLLERETTE (cone filter) BC N 12 Classe 10		PORAL BRONZE	/				
Y1.1	1	RACCORD LISSE / LISSE 1/4" (3 pieces fitting)		316L*	/				
Y1.2	1	PASTILLE Ep: 3 (plate thk.3)		A240 304L	/				
NOZZLE Y2									
Y2.Tu	1	TUBE SS Ø21.3x3.73 (pipe 1/2" sch 80S) Seamless		A312 TP304L	/				
Y2.F	1	ELEMENT FILTRANT CONIQUE A COLLERETTE (cone filter) BC N 12 Classe 10		PORAL BRONZE	/				
				*or equivalent					
REP	Qté	DESIGNATION	rev	NORME/NUANCE	EN10204	POIDS/NET kg	CERTIF N°		
ITEM	Qty	DESIGNATION	rev	NORM/MATERIAL	CERTIF	NET WEIGHT	VISA EXP		

SUPPLY BY CMP Arles

Ce document est la propriété de CMP Arles. Il ne pourra sans autorisation écrite être utilisé ou communiqué à des tiers, toutes précautions utiles seront prises pour éviter sa divulgation.

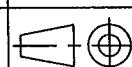
This document is the property of the CMP Arles. It may not be used or transmitted to third parties without the written consent of the company.
All necessary precautions shall be taken to avoid disclosure.

Dossier CMP Arles : 783

Page/Sheet 15/16

Client / Customer : AIR LIQUIDE AGS GmbH Engineered System N° :

Rev A

Plan N° : 783-109**PART LIST / PACKING LIST**

Echelle/Scale

		CONTROL BOARD INCLUDING ITEMS:					
37	1	MANOMETRE A TUBE AVEC TUBULURE + ECROU 1/2" GAZ (pressure gauge Ø160)		INOX SS	/		
38	3	ROBINET A SOUPAPE DN 15 PN50 Type:110 (block valve DN15 PN50 type:110 for pipe Ø17,2x2,3		304L*	/		
39	1	MANOMETRE A CAPSULE AVEC TUBULURE + ECROU 1/2" GAZ (pressure gauge)		INOX SS	/		
40	1	LEVEL INDICATOR / DIFFERENTIAL PRESSURE "YOKOGAWA" EJA 110A with MANIFOLD		/			
41	2	RACCORD 3 PIECES 1/4" LISSE/FILETE 1/4" NPT (3 pieces fitting)		316L*	/		
42	1	TUBE (pipe) RS 2" sch 10S lg: 700 (1)		A312TP304L	/		
44	1	COUDE 90° (elbow) 1" sch 10S		A403 WP304L	/		
47	1	TOLE PLIEE (bending plate) thk:5		A240 304L*	/		
48	2	PLAT 50x10 Lg: 1690 (flat 45x10)	A	304/316L*	/		
4	6	PLAT 75x40x5 (flat)		304/316L*	/		
50	1	REDUCTION (reducer) 2"-3/4" sch 10S		A312TP304L	/		
51	1	TUBE (pipe) RS 2" sch 10S lg: 390		A312TP304L	/		
52	4	TUBE (pipe) RS 1/2" sch 80S lg: 60		A312TP304L	/		
53	2	ROBINET A BOISSEAU SPHERIQUE DN 15 3/8" Ø17,2x2,3 (block valve DN15 PN50 3/8" pipe Ø17,2x2,3		316L*	/		
54	2	COUDE 90° (elbow) 3/4" sch 10S		A403 WP304L	/		
		NOZZLE G2					
55	1	TUBE (pipe) RS 3" sch 10S lg: 460		A312TP304L	/		
57	2	COUDE 90° (elbow) 3" sch 10S		A403 WP304L	/		
S/E.1	1	SUB-ASSEMBLY INCLUDING ITEMS:					
56	1	TUBE (pipe) RS 3" sch 10S lg: 500 (1)		A312TP304L	/		
58	1	TOLE Ep: 10 (plate thk.10) Ø120		A240 304L	/		
59	1	BOUCHON TETE H (hex. Head plug) 3000# 1/4" NPT		304/316L*	/		
		(1) including overlenth of 200 mini		*or equivalent		282	
REP	Qté	DESIGNATION	rev	NORME/NUANCE	EN10204	POIDS/NET kg	CERTIF N°
ITEM	Qty	DESIGNATION	rev	NORM/MATERIAL	CERTIF	NET WEIGHT	VISA EXP

SUPPLY BY CMP Arles

Ce document est la propriété de CMP Arles. Il ne pourra sans autorisation écrite être utilisé ou communiqué à des tiers, toutes précautions utiles seront prises pour éviter sa divulgation.

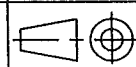
This document is the property of the CMP Arles. It may not be used or transmitted to third parties without the written consent of the company.
All necessary precautions shall be taken to avoid disclosure.

CMP ARLESConstructions Métalliques
et Préfabrication d'Arles1, Rue Copernic - Z.I. Nord - 13200 ARLES
☎: 04.90.93.33.30 - Téléfax:04.90.93.33.31
Mail:contact@cmparles.com**DEPARTEMENT CRYOGENIE SOISSONS**13, Avenue de Coucy
02200 SOISSONS☎: 03.23.93.60.69 - Téléfax:03.23.93.60.78
Mail: cryo.soissons@cmparles.com**Dossier CMP Arles : 783**

Page/Sheet 16/16

Client / Customer : AIR LIQUIDE AGS GmbH Engineered System N° :

Rev 0

Plan N° : 783-109**PART LIST / PACKING LIST**

Echelle/Scale

**PIECES LIVREES NON ASSEMBLEES
ITEMS DELIVERED IN SEPARATES PARTS**

1	1	TOLE Ep2à3 (plate thk 2 to 3)	S.S.	/	45
2	1	TOLE Ep2à3 (plate thk 2 to 3)	S.S.	/	30
3	1	TOLE Ep2à3 (plate thk 2 to 3)	S.S.	/	30
5	14	VIS HM10x30 (bolt)	EN ISO 3506-1/A2	/	
			équiv.304/316L		
6	14	ECROU HM10 (nut)	EN ISO 3506-2/A4	/	
			équiv.304/316L		
60	1	BOITE DE CONNECTION (connexion box for PT 100 ohms)	/		
61	1	PONTET (support) Thk.4	A240 304L*	/	
62	2	VIS HM4x16 (screw)	EN ISO 3506-1/A2	/	
			équiv.304/316L		
63	2	ECROU HM4 (nut)	EN ISO 3506-2/A4	/	
			équiv.304/316L		
64	2	DEMI-MANCHON (half coupling) 1/4 NPT	316L*	/	
65	2	TRAVERSEE ETANCHE 1/4 NPT	LAITON	/	

105

*or equivalent

REP	Qté	DESIGNATION	rev	NORME/NUANCE	EN10204	POIDS/NET kg	CERTIF N° or
ITEM	Qty	DESIGNATION	rev	NORM/MATERIAL	CERTIF	NET WEIGHT	VISA EXP

SUPPLY BY CMP Arles

Ce document est la propriété de CMP Arles. Il ne pourra sans autorisation écrite être utilisé ou communiqué à des tiers, toutes précautions utiles seront prises pour éviter sa divulgation.

This document is the property of the CMP Arles. It may not be used or transmitted to third parties without the written consent of the company.
All necessary precautions shall be taken to avoid disclosure.